

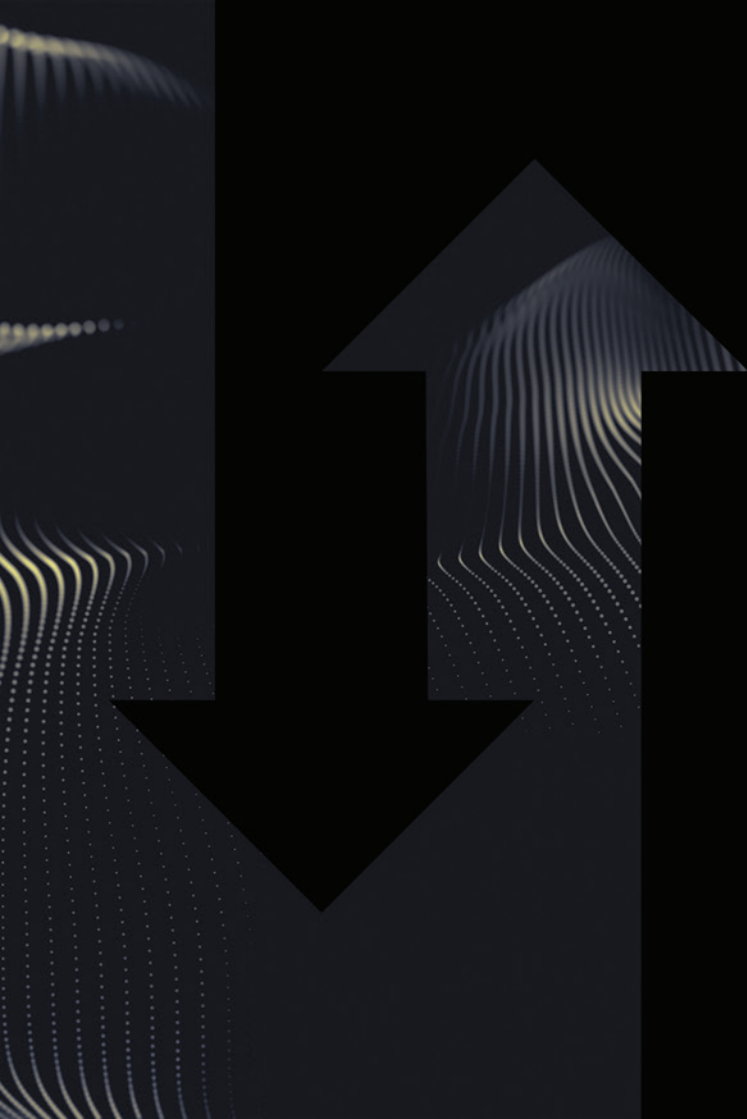


VISION
2025

**Bring
Down.
Build
Up.**


contents

- 3** Acts 9:31
- 4** Message from David & Susan
- 6** Photos & Celebration
- 10** Vision 2023-24 Update
- 14** Vision 2025 Scripture
- 18** Vision 2025 Overview
- 22** Step by Step Guide
- 24** Gift Aid
- 25** Questions
- 26** Prayer
- 28** Ephesians 2:21-22



“Then the church throughout Judea, Galilee and Samaria enjoyed a time of peace and was strengthened. Living in the fear of the Lord and encouraged by the Holy Spirit, it increased in numbers.”

Acts 9:31



4

2024 has been a blessed year in the life of One Church. The church continues to know peace, strength, the fear of the Lord, encouragement, the Holy Spirit's power and increase. All this has come from Him and Jesus is the centre of One Church. We are overwhelmed by His goodness.

Already, in the first 8 months of 2024...

- ➔ We have seen nearly **400** people of all ages responding in some way to the gospel through appeals to come to the cross of Jesus.
- ➔ We have seen over **250** people added to the One Church family.
- ➔ We have planted our first site outside of Leicester, with 51 people sent out to begin **One Church Loughborough**.
- ➔ Our amazing **Open Hands** Compassion Centre for the City has continued to serve 1000s of people with the love of Jesus and practical help.
- ➔ Our work with **children, youth and young adults** continues to grow in numbers and depth.
- ➔ The **One Centre** is full of life and activity with church and community projects, alongside the brilliant Way Coffee.
- ➔ We have been honoured to give away over **£130,000** to Open Hands, our mission partners, our denomination and to people in need. We estimate that this amount will grow to over **£180,000** by the end of the year.
- ➔ We have continued to see blessed finances with regular tithes and offerings **growing by around 12%**.

As we look ahead to 2025 we see a door of opportunity opening to further strengthen our ministries and to further expand the community outreach of One Church.

We know it is God's heart for us to come again and together bring a Vision Offering for the strengthening of the house and its future. We are together going to 'Bring Down and Build Up'.

In this booklet you will find an update of last year's Vision Offering and the difference it has made and you will find out the details of the 2025 Vision Offering, what we are going to do, how we are believing to do it and the vital part you can play.



You are loved and we are
in this together.



David and Susan Hind



One Church Many Places



New Life



New Events



7

New Outreach



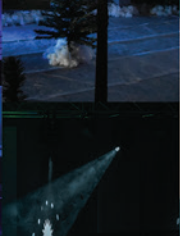
New Growth





Not Just Sunday EVERY DAY!





Events and Much More



In Nov 2023, around £325,000 was given and pledged. We expect over 93% of that to be received. This has enabled us to strengthen 7 areas:

Vision Offering 2024



STRENGTHEN SITES



STRENGTHEN OPEN HANDS



STRENGTHEN PLANS FOR NO.12



STRENGTHEN CITY-WIDE IMPACT



STRENGTHEN BUILDINGS



STRENGTHEN MORTGAGE



STRENGTHEN RESERVES



Around **£27,000** invested to launch and strengthen our Loughborough Site. This has covered equipment, hires, staff costs, outreach, etc.

£35,000 invested into Open Hands to strengthen our work with those in need and to increase the reserves as a charity.

Around **£10,000** invested in plans for No 12 to prepare a viability study, survey and to plan for future development.

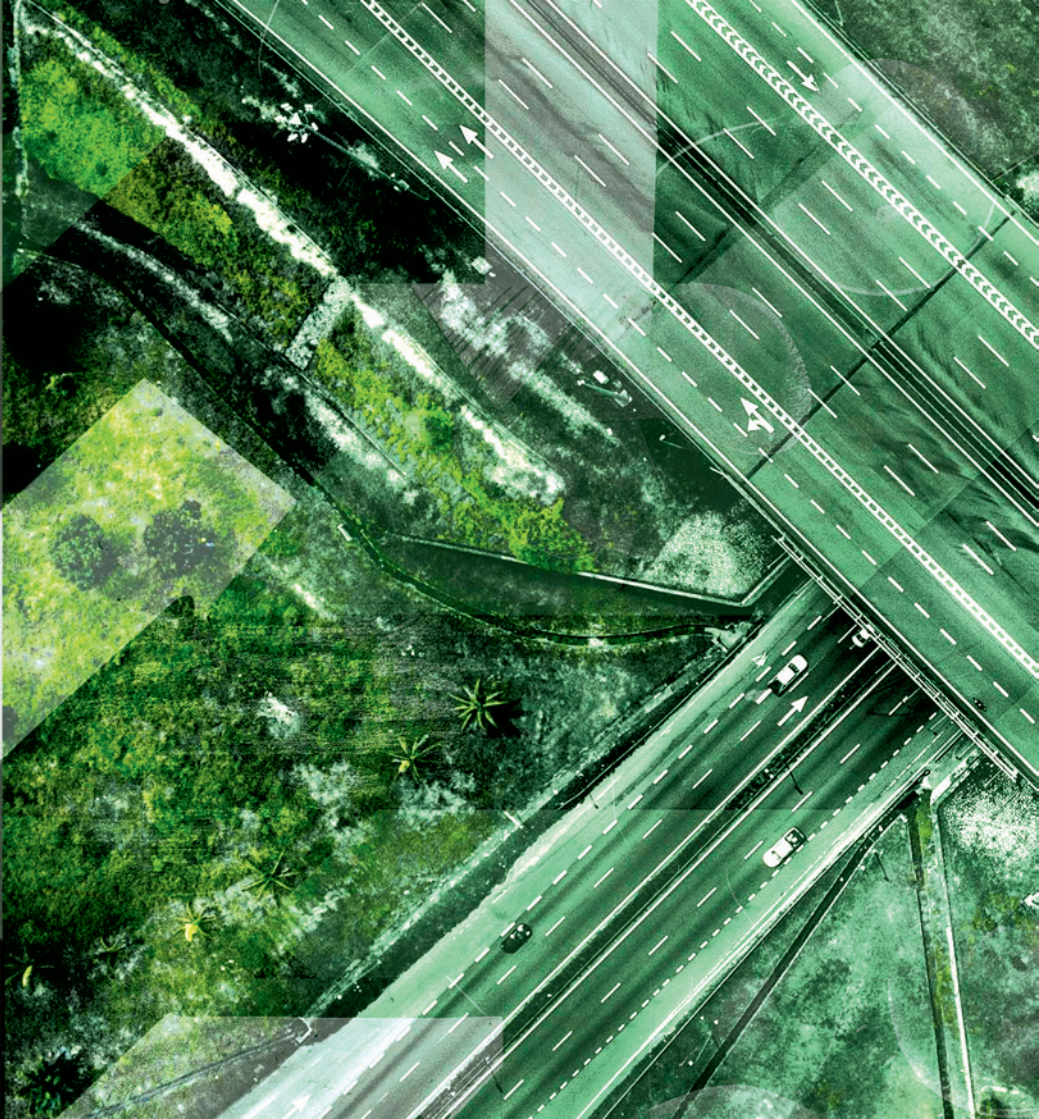
Around **£10,000** invested in 'United', including the J.John mission, events and wider connections and administration as we move forward.

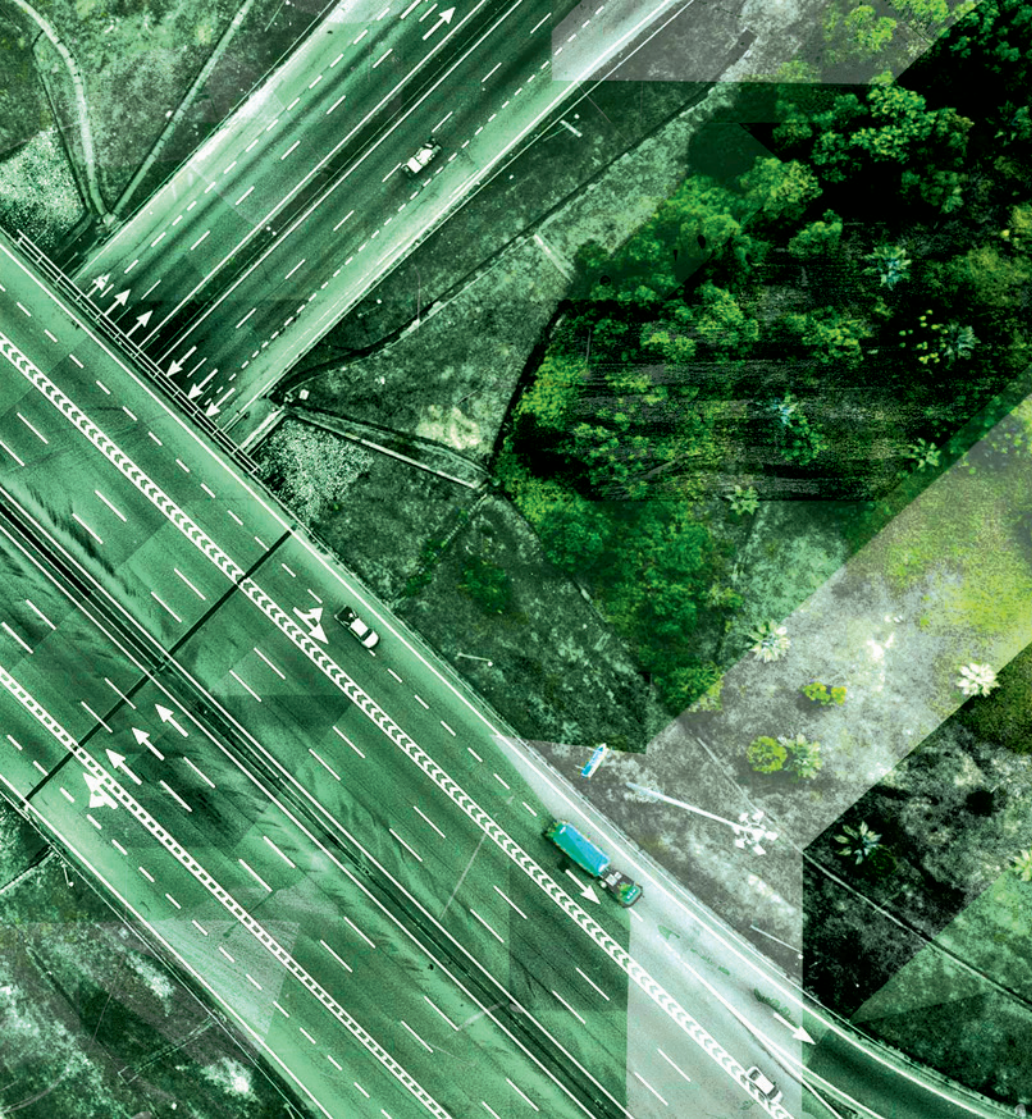
Around **£70,000** invested in roof repairs, redecorating, practical advancements in No 10 and redevelopment at the Oak Centre.

£100,000 was paid off the mortgage alongside our normal monthly payments.

£50,000 was invested into our reserves.

Bring Down





Build Up

**“PASS THROUGH, PASS
PREPARE THE WAY
BUILD UP, BUILD
REMOVE THE STONES.
FOR THE NATIONS.”**

**THROUGH THE GATES!
FOR THE PEOPLE.
UP THE HIGHWAY!
RAISE A BANNER
ISAIAH 62:10**

**Bring
Down.
Build
Up.**


Bring Down





Build Up

Bring Down the Mortgage



In September 2023 our Mortgage was £900,000 - this was made up of existing borrowing that originally helped buy No 12 Frog Island in 1990 and the £465,000 we borrowed in 2023 as part of the two million pound development of the One Centre.

In 2023/2024 we will have made payments of £215,000 against our mortgage comprising £120,000 of capital and £95,000 of interest. Our outstanding mortgage at the end of December 2024 will be £780,000.

Through the 2025 Vision offering we will continue to **Bring Down** our mortgage with 50% of everything given going towards reducing our mortgage - We have a long term target to be debt free.

Bring Down the Ramp of No.12

We have looked at the options for No 12 Frog Island. We believe that No.12 is part of One Church's future. We don't want to sell the land. It would restrict future generations from expanding the site and further reaching our city. However, we are discussing the potential sale of a strip of land to serve local business and widen the entrance road.

No.12 will need to be fully levelled to the ground and rebuilt. The costs, current design and plans mean we will not renovate the current building. We need a miracle and are prepared to begin earlier, but are aiming to start development in 2026.

We continue to dream of what may be... a family centre... a sports hall... a space for the Leicester Deaf Centre... serving the community. Let us keep dreaming together.

As an initial step of faith, we are going to **Bring Down** the ramp from the side of No.12. This will provide extra activity space and additional parking. The cost is around £50,000.

The rest will follow and we are going to see miracles to help us finish the whole project.

Build Up in Community

We are in a season of growth and development. We will **Build Up** our Community Outreach both within One Church life, and in our local communities. This will outwork in many ways, including the following:

A new **Community Weekend** in June 2025, where many 100s of people from One Church serve in 20-30 projects across the city and county.

A new **children's community 'Hub'** launching in the One Centre.

A new **Youth Alpha course**.

A new **community project in Loughborough**.

A new **Loughborough-based Young Adults Small Group**.

Strengthening the community work with **T1-16s at the Oak Centre**.

A new emphasis on **building a United community** with other churches.

A new community **connecting those in business** within One Church.

A new **expansion of small groups** with community at the heart.

This will all need administrative input resource to both sustain and thrive.



Build Up in Ministry

We are believing to continue to **Build Up** many areas of ministry, as the Father leads.

In response to Mark 11:17 ('My house will be called a house of prayer for all nations'), we are going to develop, build and run a movable prayer room at the One Centre.

We will begin a 'seed fund' for No.12 to enable us to begin designing and planning. We will begin to save as an act of faith.

We will further invest into our youth and children's work to upgrade equipment where needed and advance all we do in ministry, outreach and discipleship.

We will refresh and equip all sites and with required resources and equipment.

We will carry out any small building developments wherever needed.

As we prepare, we are asking each of us to do 4 things

1 Say Thank You

Please pause and thank the Father for all His blessings on your life.

We then invite you to ask the Holy Spirit to guide you in your response.

2 Check Your Regular Giving

Every part of One Church flows from the generous giving of the people. Through every standing order, tithe and offering, we are able to outwork the One Church vision across all sites and around Leicestershire.

We are inviting everyone to check that their regular giving is up to date and in place. Whether you are adjusting your giving, beginning to give or preparing to give, thank you.

A standing order is a practical way to regularly and faithfully give. To set one up, use the details found online and if you need any help, please ask. onechurch.org.uk/giving

3 Bring a Vision Offering / Pledge

On Sunday Nov 3rd we will have a special One Church 'Vision Sunday'. We are simply inviting you as an individual or as a family to come before God over the next few weeks with an open heart and to ask Him what He wants you to give and to pledge, and then to have the faith to step out and obey.

If you give regularly into One Church we would ask you not to divert your regular giving to the Vision Offering, but rather to prayerfully consider giving a special offering over and above as you are led.

We are all invited to give in two main ways:

- a **sacrificial one off gift** on the day
- a **Faith Pledge** to be redeemed over 12 months.

4 On The Day 3rd November

Please do all you can to be at one of the two Vision Sunday morning gatherings at the One Centre, during which we will bring our gifts and pledges and then announce and celebrate what has been given! On Vision Sunday itself you will be encouraged to use the Giving/Faith Pledge card. You will also be able to fill this in online from October 28th too.

Every penny is precious and deeply valued by us and Jesus.

GiftAid

giftaid it

Gift Aid is a UK government scheme that allows charities to claim an **extra 25p for every £1 you donate**, at no extra cost to you. To qualify, you must be a UK taxpayer and make a Gift Aid declaration to the charity, confirming that you have paid enough tax to cover the amount being claimed. This means if you donate £10, the charity receives £12.50. It's a simple way to **make your donations go further** and support your favourite causes more effectively.

If you are a UK taxpayer and would like to **increase your giving by 25%** in this way, please access the online form by using the link or scanning the QR code.

If you **complete a declaration** now we can claim historical Gift Aid for up to four previous years of giving at One Church. If you haven't been a taxpayer for that length of time just let us know what period you would like us to claim for.

Thank you so much, and as ever if we can answer any financial questions or help you understand further, please email us.



<https://rb.gy/o5xe5h>

Sarah Hickman | Finance Manager | sarah.hickman@onechurch.org.uk

Phil John | Trustee | phil.john@onechurch.org.uk

Questions?

⇒ **How has the first year of the One Church building worked out?**

We have loved the new building and have grown into our use of it. It has been extensively used which has led to us redecorating again. The building has given us space to grow every ministry and we are incredibly blessed. We also lease some parking spaces, which brings in income and serves our neighbours.

⇒ **What are your reflections on the Vision Offering in Nov 2023?**

Last year's vision offering was a huge blessing. The redemption of faith pledges has again been remarkable and the many stories of people trusting God and being blessed has been so powerful. It was a time that expanded our faith and showed the power of us giving together as a whole church.

⇒ **Why are we having a Vision Offering again?**

The 2025 Vision Offering is another opportunity to listen and do what the Holy Spirit says. By being obedient to what He says, we expand our faith together. We are believing for huge generosity and blessing as we build his house first.

⇒ **How are our overall finances?**

2023 was the largest year of giving in our history as a church. Every area is strengthened. You can view our accounts on the charity commission website.

⇒ **Can I give to a specific area of the vision?**

Yes you can. If you would like to know further details please ask. However, it is also helpful for us to have resources which can be allocated where they are most needed.

A Prayer

Father, you are Lord of all, there is no one like you. We can see your amazing blessing and we stop to say thank you.

You have always been faithful, and we have always had the people, premises and provision for the vision you have given us. You are our Provider.

As we seek to honour you in our vision and in further developing the work you have blessed us with, we thank you that you are with us and you go ahead of us.

We declare that everything we are is centred on loving you and loving people and creating space for others to find you.

Father, please help each of us to do our part, help us to hear from you and to bring our gifts joyfully.

We bless every church in Leicestershire and every leader and we proclaim that our city and county belong to you. Jesus is Lord!

Amen



“This entire building is under construction and is continually growing under his supervision until it rises up completed as the holy temple of the Lord himself. This means that God is transforming each one of you into the Holy of Holies, his dwelling place, through the power of the Holy Spirit living in you!”



Ephesians 2:21-22 (TP7)

